

Word of the Day

Autumn Term 2020

Week 3 – 15th September 2025



'Words unlock the doors to a world of understanding...'

This Week's Words

Grasshopper

airport

mountain

dangerous

jungle

waterfall

Shinobi

famous

kidnap

creep

gasp

encourage



VOCABULARY NINJA

Grasshopper (Tier 1)

airport

mountain

dangerous

jungle

waterfall



VOCABULARY NINJA

Shinobi (Tier 2)

famous

kidnap

creep

gasp

encourage



VOCABULARY NINJA



Grasshopper Word of the Day

Word of the Day:

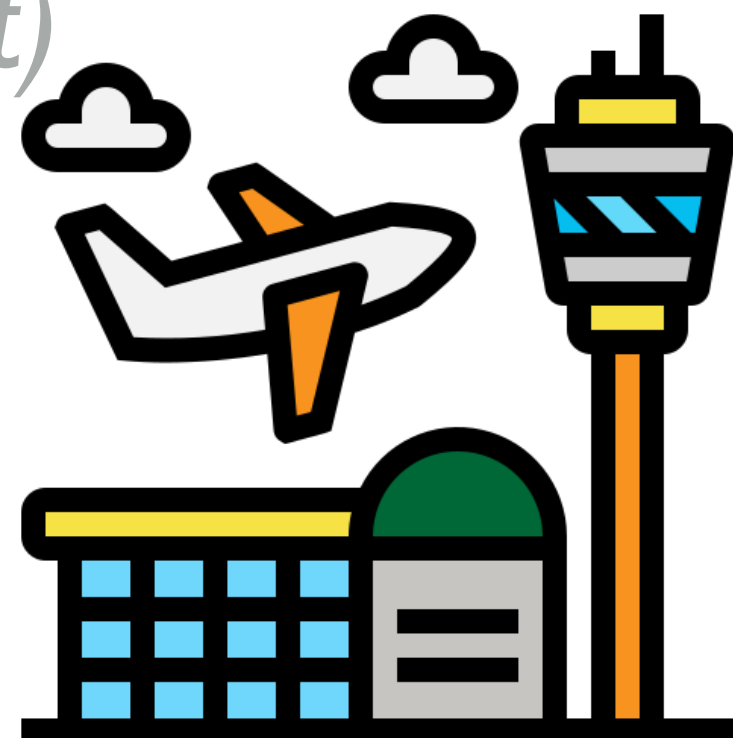
Pronunciation / Syllables

airport
(air-port)

Word Class
(noun)

Definition:

An airport is a place where aircraft land and take off, which has buildings and facilities for passengers.



The children visited the **airport** on a school trip.

Synonym:

airfield

runway

Antonym:

Prefix / Suffix:

-s

Rhyme:

escort

Link Word:

crowded

large



Grasshopper Word of the Day

Word of the Day: **mountain**

Word Class
(noun)

Pronunciation / Syllables

(*moun-tain*)

Definition:

A mountain is a very high area of land with steep sides.



Mountains were the new topic in geography.

Synonym:

hill

peak

Antonym:

valley

Prefix / Suffix:

-s

-ous

Rhyme:

fountain

Link Word:

rocky

snowy



Grasshopper Word of the Day

Word of the Day: **dangerous**

Word Class
(adjective)

Pronunciation / Syllables

(dan-ger-ous)

Definition:

If something is dangerous, it is able or likely to hurt or harm you.



Mr Robson had left some **dangerous** tools in the corridor.

Synonym:

risky

unsafe

Antonym:

safe

Prefix / Suffix:

non-

-ly

Rhyme:

Link Word:

highly

potentially



Grasshopper Word of the Day

Word of the Day:

Pronunciation / Syllables

jungle
(jun-gle)

Word Class
(noun)

Definition:

A jungle is a forest in a tropical country where large numbers of tall trees and plants grow very close together.



The school's garden was overgrown like a **jungle**.

Synonym:

rainforest

forest

Antonym:

Prefix / Suffix:

-s

Rhyme:

bungle

Link Word:

tropical

vast



Grasshopper Word of the Day

Word of the Day:

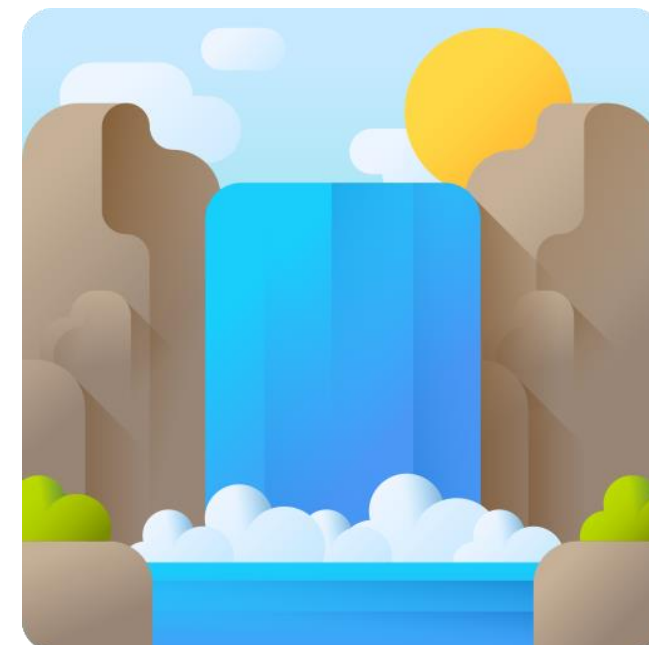
waterfall
(wa-ter-fall)

Word Class
(noun)

Pronunciation / Syllables

Definition:

A waterfall is a place where water flows over the edge of a steep, high cliff in hills or mountains, and falls into a pool below.



The river ended and became a **waterfall**.

Synonym:

cascade

rapids

Antonym:

Prefix / Suffix:

-s

Rhyme:

Link Word:

rushing

powerful



Shinobi Word of the Day

Word of the Day:

Pronunciation / Syllables

famous
(fa-mous)

Word Class
(adjective)

Definition:

Someone or something that is famous is very well known.



The **famous** artist visited the year three class.

Synonym:

acclaimed

legendary

Antonym:

infamous

unknown

Prefix / Suffix:

non-

-ly

Rhyme:

Link Word:

remain

suddenly



Shinobi Word of the Day

Word of the Day:

Pronunciation / Syllables

kidnap
(*kid-nap*)

Word Class
(verb)

Definition:

To kidnap someone is to take them away illegally and by force, and usually to hold them prisoner in order to demand something.



Jenny **kidnapped** Arnold's teddy bear.

Synonym:

abduct

snatch

Antonym:

release

liberate

Prefix / Suffix:

-ing

-ed

Rhyme:

Link Word:

secretly

suddenly



Shinobi Word of the Day

Word of the Day:

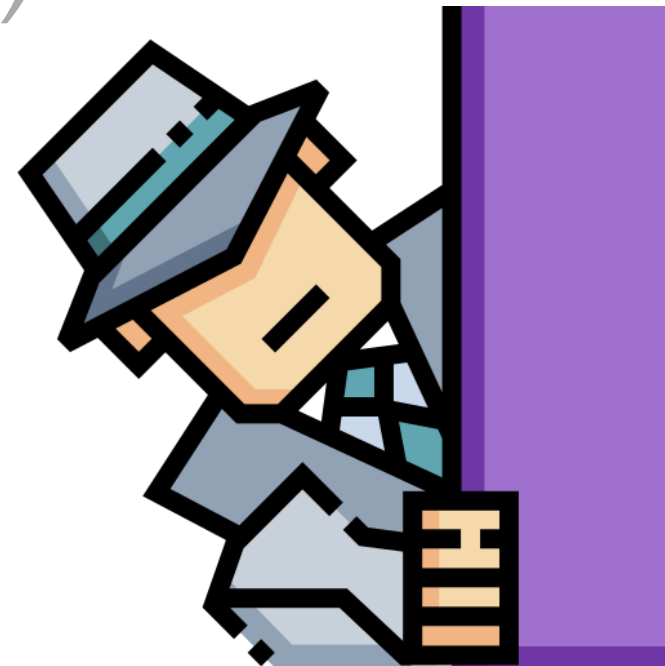
Pronunciation / Syllables

creep
(creep)

Word Class
(verb / noun)

Definition:

When people or animals creep somewhere, they move quietly and slowly.



Riley **crept** along the corridor to see if a teacher was there.

Synonym:

tiptoe

skulk

Antonym:

Prefix / Suffix:

-ing

-s

Rhyme:

sleep

creep

Link Word:

around

along



Shinobi Word of the Day

Word of the Day:

Pronunciation / Syllables

gasp
(gasp)

Word Class
(noun / verb)

Definition:

A gasp is a short quick breath of air that you take in through your mouth, especially when you are surprised, shocked, or in pain.



The class **gasp**ed at the ending of the story.

Synonym:

pant

puff

Antonym:

Prefix / Suffix:

-ed

-ing

Rhyme:

clasp

rasp

Link Word:

loudly

faint



Shinobi Word of the Day

Word Class
(verb)

Word of the Day: **encourage**
(*en-cou-rage*)

Pronunciation / Syllables

Definition:

If you encourage someone, you give them confidence, for example by letting them know that what they are doing is good and telling them that they should continue to do it.



Carl always **encouraged** Sally to do her best.

Synonym:

boost

inspire

Antonym:

dissuade

discourage

Prefix / Suffix:

-ed

-ment

Rhyme:

courage

discourage

Link Word:

constant

strongly

Vocabulary Laboratory



Describe / Definition:

Use it in a sentence:

Focus Word (write below):

Word Class:

Synonyms:

(words with same / similar meaning)

Antonyms:

(words with opposite meaning)

Draw your sentence:

Rhymes:

(words that sound the same)

Link Words:

(Example: football = pitch, team, player)

Vocabulary Visualiser

Draw the
Grasshopper words
and bring them to life.



Word: mountain

Word: jungle

Word: dangerous

Word: waterfall



Vocabulary Visualiser

Draw the **Shinobi**
words and bring
them to life.



Word: kidnap

Word: gasp

Word: creep

Word: encourage



Matching Meanings

Draw lines from the **Grasshopper** words to their definitions.



Grasshopper Word

Grasshopper Definitions

airport

A *** is a very high area of land with steep sides.



mountain

If something is ***, it is able or likely to hurt or harm you.



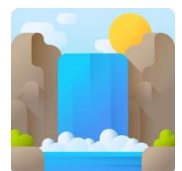
dangerous

An *** is a place where aircraft land and take off, which has buildings and facilities for passengers.



jungle

A *** is a place where water flows over the edge of a steep, high cliff in hills or mountains, and falls into a pool below.



waterwall

A *** is a forest in a tropical country where large numbers of tall trees and plants grow very close together.



Matching Meanings

Draw lines from the **Shinobi** words to their definitions.



Shinobi Word

Shinobi Definitions

famous

When people or animals *** somewhere, they move quietly and slowly.



kidnap

If you *** someone, you give them confidence, for example by letting them know that what they are doing is good and telling them that they should continue to do it.

creep

To *** someone is to take them away illegally and by force, and usually to hold them prisoner in order to demand something.



gasp

A *** is a short quick breath of air that you take in through your mouth, especially when you are surprised, shocked, or in pain.



encourage

Someone or something that is *** is very well known.





Display Slips

The following slides are for classroom display. As you teach each Word of the Day, words can be displayed in the classroom to enable pupils to use the taught vocabulary in an independent manner.





airport



mountain





dangerous

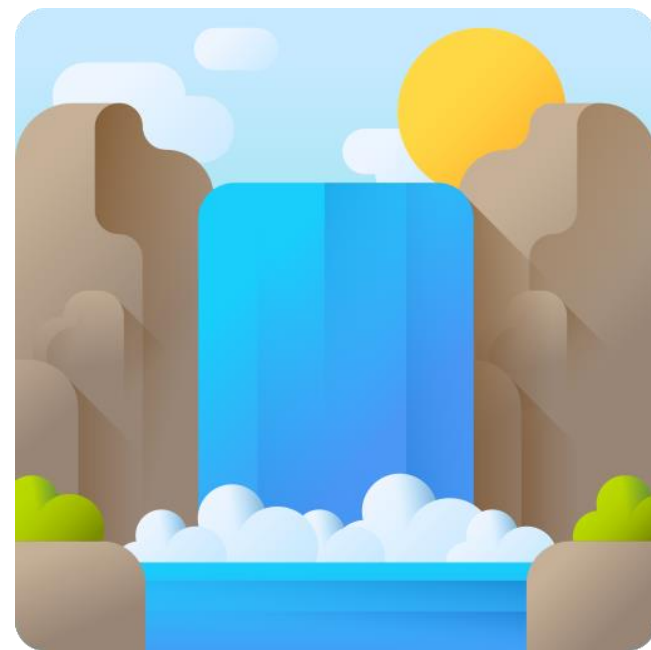


jungle





waterfall



famous

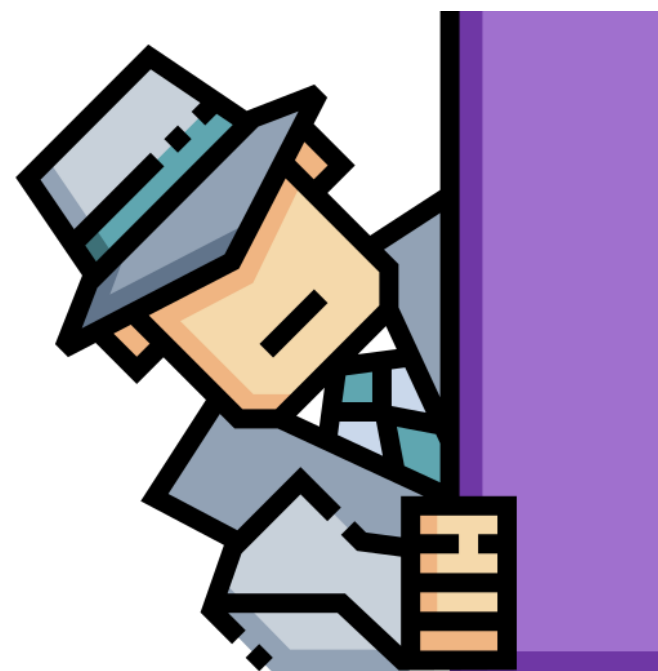




kidnap

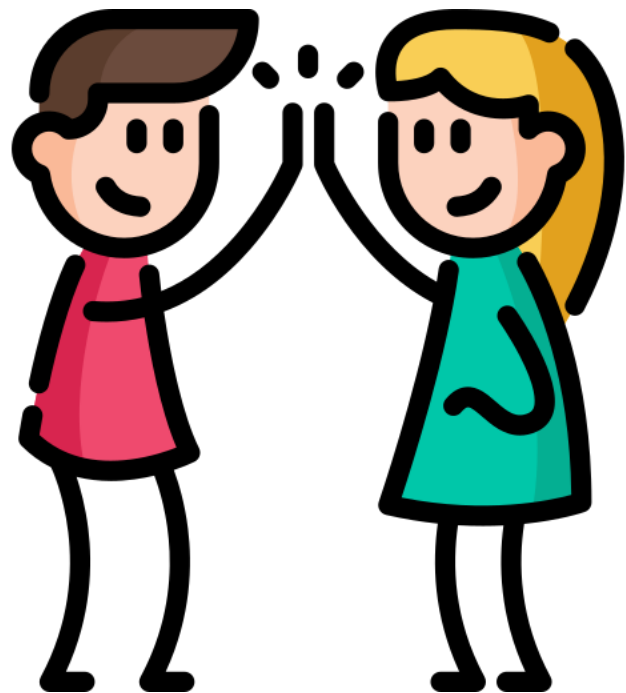


creep





gasp



encourage

